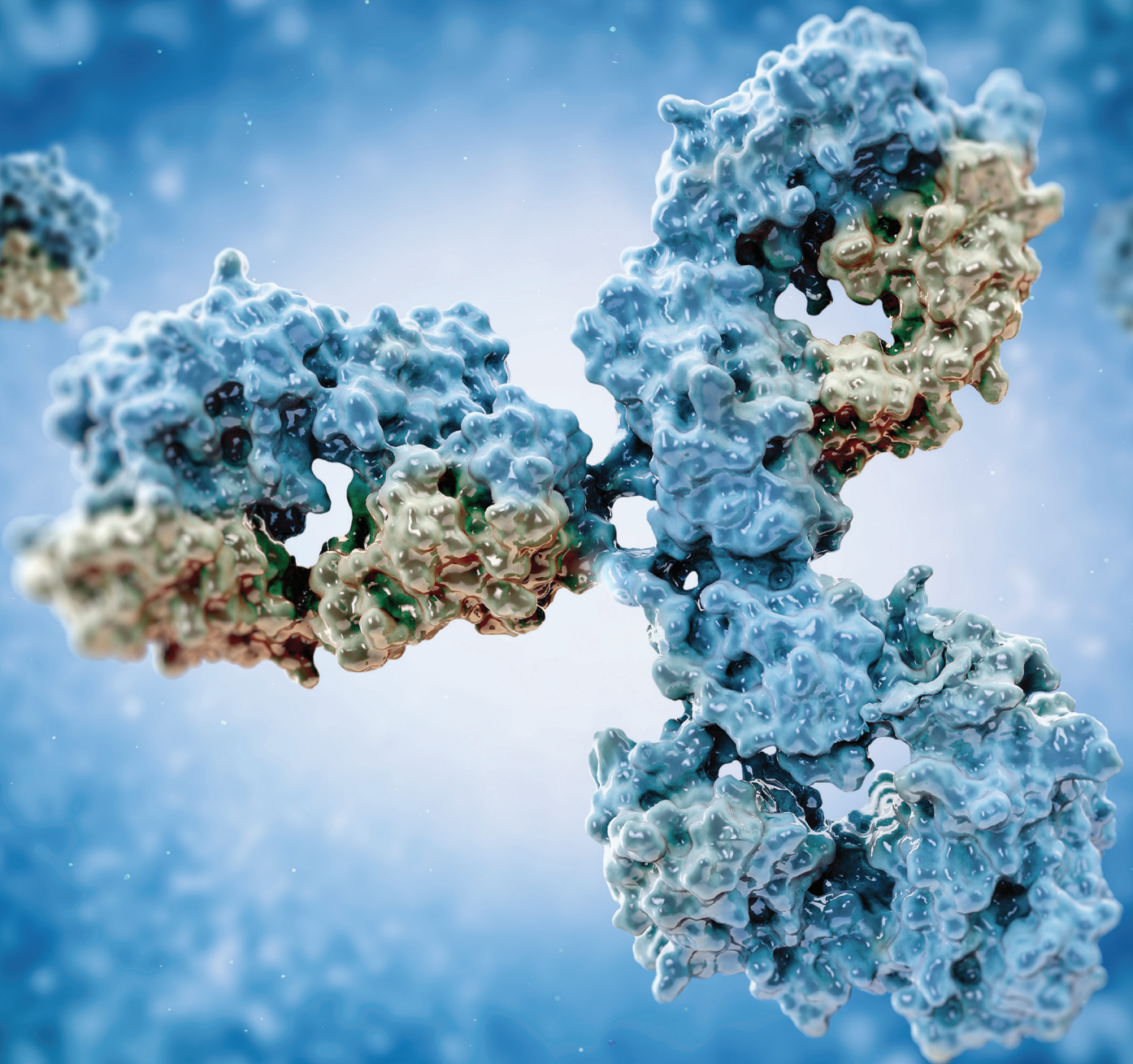




BIOZOL

FIT FOR SCIENCE

BRINGING QUALITY & EFFICIENCY TO RESEARCH



PRIMARY ANTIBODIES





Your Partner for Primary Antibodies

Biozol Diagnostica Vertrieb GmbH are proud to have been providing products and services within the life science arena since 1989. We always aspire to give our customers the fastest response times and high standards of customer service.

Used to detect a broad range of antigenic targets, high quality monoclonal and polyclonal primary antibodies are a laboratory essential. They are vital tools for researchers wanting to study proteins implicated in many disease states.

Primary antibodies are immunoglobulins developed to specifically bind proteins or molecules of interest. Polyclonal antibodies bind to multiple epitopes on the target antigen. Whereas, monoclonal antibodies, bind a single specific epitope.

Popular techniques utilising the binding properties of immunoglobulins include flow cytometry, immunohistochemistry, ELISA and Western blotting.

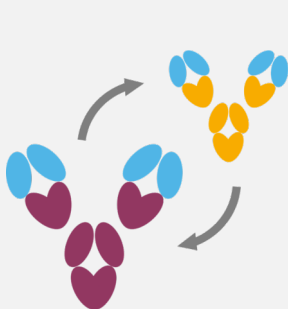
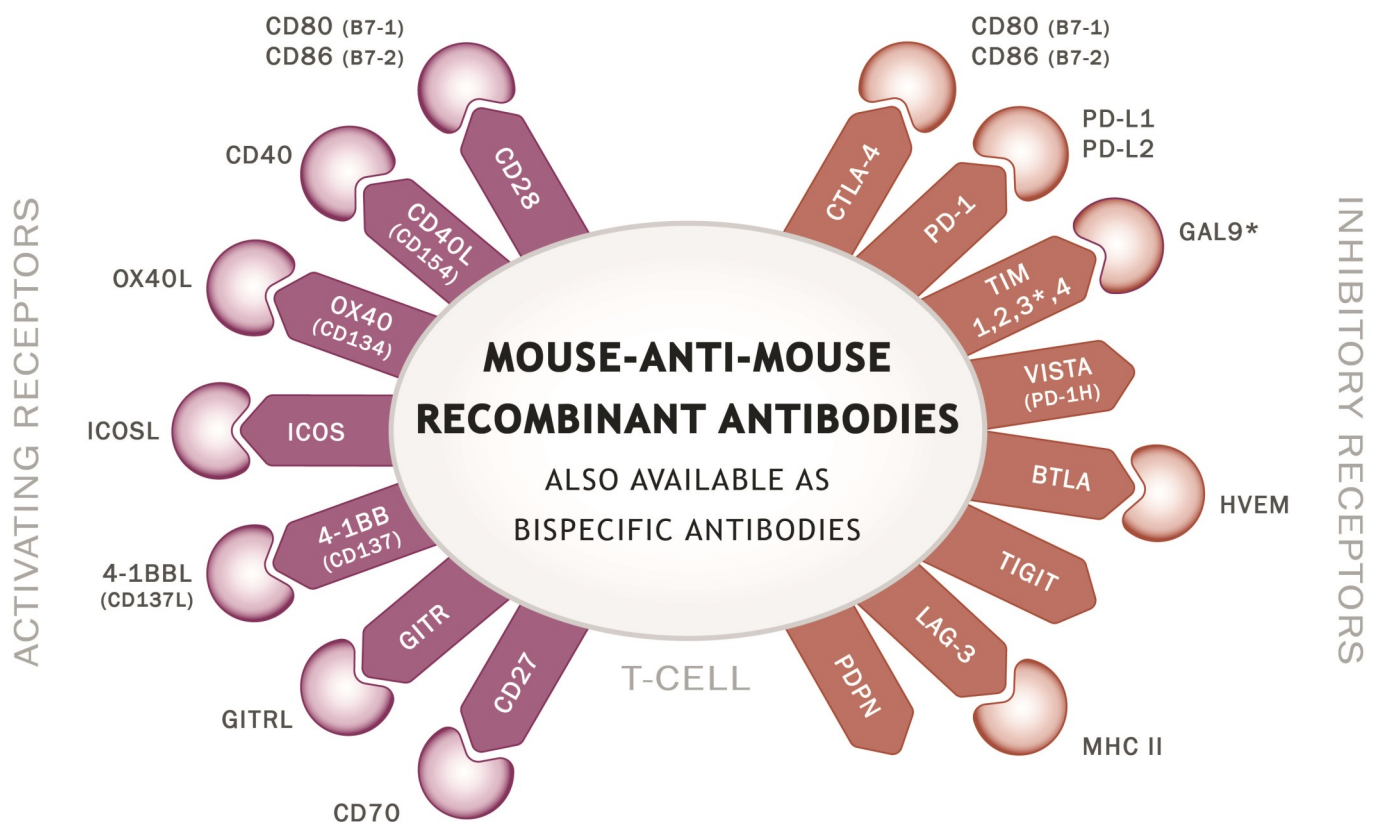
BIOZOL's portfolio of primary antibodies includes antibodies from a choice of host species, directed against a range of target species. Available conjugated for direct detection, or unconjugated for use with our extensive range of secondary antibodies.





Antibodies against proteins involved in co-stimulation and other aspects of immune cell regulation are of particular interest to therapeutics developers. Some have already entered the clinic, with more in the development pipeline. However, many aspects of immune cell signalling are still unknown, and researchers require ever more advanced tools to tap into this potential. Absolute Antibody has developed a collection of recombinant engineered antibodies against clinically relevant proteins, including mouse homologues of current therapeutic targets.

Recombinant Antibodies for Immunotherapy Research



- ✓ Your favourite research tools, now updated through antibody engineering for improved performance *in vivo*
- ✓ Reduce immunogenicity by matching antibody species to your host organism
- ✓ Tailor effector function by choosing from our range of antibody isotypes and subtypes
- ✓ Explore new possibilities by combining two of these antibodies into a custom bispecific reagent



Engineered Mouse-Anti-Mouse Antibodies

Antibody ID	Mouse Target	Antibody Clone	Original Format
Ab01027	BTLA	HMBT-6B2	Hamster IgG
Ab00895	CD27	RM27-3E5	Rat IgG2a
Ab00670	CD27	LG.3A10	Hamster IgG
Ab00285	CD28	D665	Mouse IgG1
Ab00286	CD28	E18	Mouse IgG2b
Ab01109	CD40	3/23	Rat IgG2a
Ab01087	CD40L (CD154)	MR1	Hamster IgG
Ab00816	CD70	TAN 1-7	Rat IgG2a
Ab01056	CD70	TAN1-6	Rat IgG2a
Ab01028	CD80 (B7-1)	RM80	Rat IgG2a
Ab01029	CD86 (B7-2)	PO.3	Rat IgG2b
Ab01018	CTLA-4	9D9	Mouse IgG2b
Ab00894	CTLA-4	9H10	Hamster IgG2
Ab01088	GAL9 (Galectin 9)	RG9-35	Rat IgG2a
Ab00374	GITR	YGITR 860.103.5	Rat IgG2b
Ab00631	GITR	YGITR765	Rat IgG2b
Ab01060	GITR	DTA-1	Rat IgG2a
Ab00630	GITRL	YGL386	Rat IgG1
Ab01026	HVEM	HMHV-1B18	Hamster IgG
Ab00814	ICOS	7E.17G9	Rat IgG2b

Antibody ID	Mouse Target	Antibody Clone	Original Format
Ab00882	ICOSL	HK5.3	Rat IgG2a
Ab00372	LAG3	YLAG 77.5.1	Rat IgG2b
Ab00110	OX40 (CD134)	OX86	Rat IgG1
Ab00564	OX40L	OX-89	Rat IgG1
Ab00813	PD-1	RMP1-14	Rat IgG2a
Ab01017	PD-1H (VISTA)	mam82	Mouse IgG1
Ab01016	PD-1H (VISTA)	MH5A	Hamster IgG
Ab00373	PD-L1	YDC 127.1.1	Rat IgG2a
Ab00883	PD-L2	TY25	Rat IgG2a
Ab00875	Podoplanin (MAP tag)	PMab-1	Rat IgG2a
Ab01021	sCTLA-4	L4P2F5*F10	Mouse IgG1
Ab00973	TIGIT	4D4	Hamster IgG
Ab01032	TIM-1	3B3	Rat IgG2a
Ab01110	TIM-2	RTM2-14	Rat IgG2a
Ab01057	TIM-3	2C12	Rat IgG1
Ab01058	TIM-4	5G3	Rat IgG1
Ab01059	TIM-4	3A1	Rat IgG1
Ab01052	4-1BB (CD137)	LOB12.3	Rat IgG1
Ab00881	4-1BBL (CD137L)	TKS-1	Rat IgG2a
Ab01054	4-1BBL (CD137L)	AT113-2	Rat IgG1

Our Primary Antibody Categories:

- Anti-Allergen Antibodies
- Anti-Virus Antibodies
- Focus on Epitope Tags
- Focus on F4/80 Clone Cl:A3-1
- Focus on Isotype Controls
- Focus on Non-IgG Isotypes
- Focus on Recombinant Antibodies derived from Human Patients
- Recombinant Antibodies for Immunotherapy Research
- Recombinant Antibodies for In Vivo Research Use
- Research Grade Biosimilars

Primary Antibodies from Atlas Antibodies

Atlas Antibodies offers over 21,000 highly characterized primary antibodies targeting all human proteins. The antigens are designed by selecting the target sequence with the lowest identity to all other human proteins. The resulting antibody is then affinity-purified and manufactured using a standardized production process to ensure high specificity and reproducibility.

Atlas Antibodies in Cancer Research

Using antibodies to explore the human genome and validating them for both normal and cancerous tissues, is a great resource for biomarker discovery. At Atlas Antibodies we have a strong focus on cancer. Our product catalog features a wide range of antibodies for cancer research such as colorectal cancer, breast cancer, prostate cancer, melanoma and much more. We offer several defined oncology biomarkers as well as a wide portfolio of antibodies for cell proliferation/differentiation, signal transduction, apoptosis, DNA damage/repair, cell adhesion, proto-oncogenes, tumor suppressors and more. We are proud to offer a wide selection of PreciA Monoclonals and Triple A Polyclonals for cancer research.

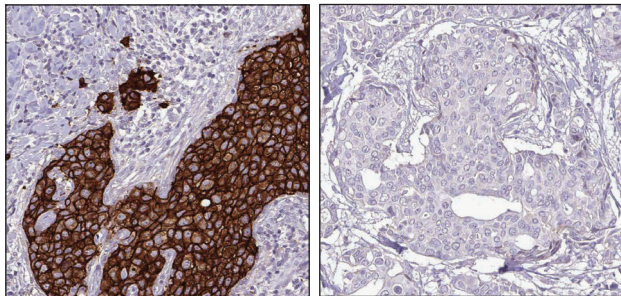


Figure 1

Immunohistochemical staining of human breast cancer tissue using Anti-HER2 antibody (AMAb90627), showing strong membranous positivity in HER2-positive breast cancer (left) and no positivity in HER2-negative breast cancer (right), as expected.

Triple A Polyclonals are rabbit polyclonal antibodies developed within the Human Protein Atlas project. We offer 21,000 Triple A Polyclonals, each supplied with more than 500 annotated IHC images. The antibodies have been used for staining both normal human tissue samples and human cancer samples.

PreciA Monoclonals are mouse monoclonal antibodies developed against carefully selected targets. We offer several oncology biomarkers as well as a wide range of antibodies for different cancer-related pathways.

Our antibodies are always supplemented with the exact immunogen sequence. The PreciA Monoclonals antibodies are epitope mapped for your convenience.

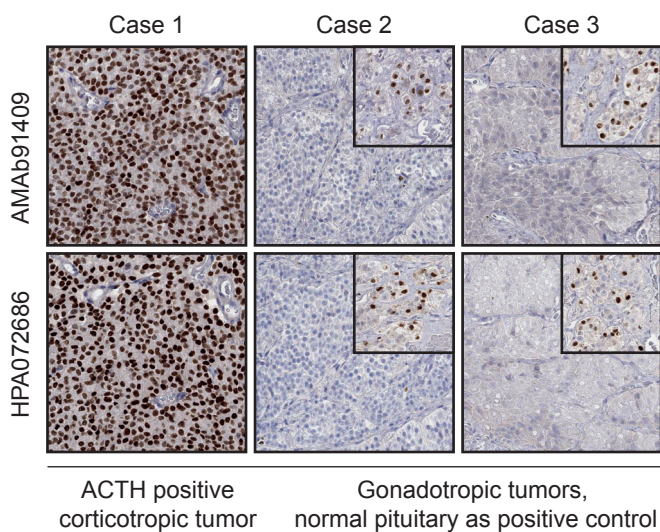


Figure 2

Immunohistochemical staining of ACTH-positive corticotrophic tumor (Case 1) and gonadotrophic tumors (Case 2 and 3) using Anti-T-Pit monoclonal (AMAb91409, upper panels) and polyclonal (HPA072686, lower panels) antibodies. Note strong nuclear positivity in the majority of cells in corticotrophic tumor and absence of immunoreactivity in gonadotrophic tumors. Insets in Case 2 and 3 images show nuclear positivity in normal adenohypophysis. Identical staining pattern is observed with both monoclonal and polyclonal antibody.

Prognostic Biomarkers

Cancer is a major health problem throughout the world, and due to a world population with an increased life-expectancy, there is no reason to expect a decline in cancer incidence in the near future. Prognostic biomarkers provide information about the patients' overall cancer outcome promising to improve estimation of patient prognosis, leading to a more individualized treatment.

Prognostic biomarkers play an increasingly important role in cancer detection, treatment and patient follow-up.

The Pathology Atlas contains mRNA and protein expression data from multiple forms of human cancer. Correlation analysis based on mRNA expression levels of human genes in cancer tissue and the clinical outcome for almost 8,000 cancer patients is presented in a gene-centric manner and includes more than 18,000 Kaplan-Meier survival plots.

Together with our research partners from the Human Protein Atlas project we are in a unique position to perform antibody-based biomarker discovery.

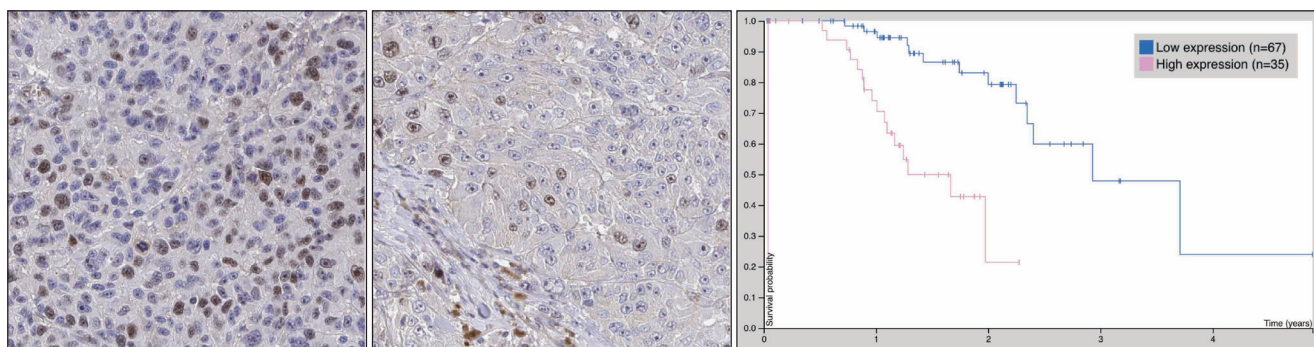


Figure 3

Immunohistochemical staining for Anti-TIMELESS (HPA060655) antibody of human melanoma. Left and middle images show high and low immunoreactivity, respectively. The Kaplan-Meier plot on the right, summarize results from analysis of correlation between mRNA expression level and patient survival for Anti-TIMELESS (HPA060655). Shorter patient survival is associated with high expression of TIMELESS, as expected.

The Epithelial to Mesenchymal Transition (EMT) Marker Panel

To understand the molecular mechanisms of cancer metastasis, it is indispensable to identify the genes whose alterations accumulate/decline during cancer progression as well as the genes whose expression is responsible for the acquisition of metastatic potential in cancer cells.

Atlas Antibodies offers a panel of monoclonal antibodies against the key EMT markers for cell junctions, cytoskeletal changes, transcription regulation and migration-motility. Our EMT panel includes monoclonal antibodies with different isotypes, which allows for co-localization studies using immunofluorescence with isotype specific secondary antibodies.

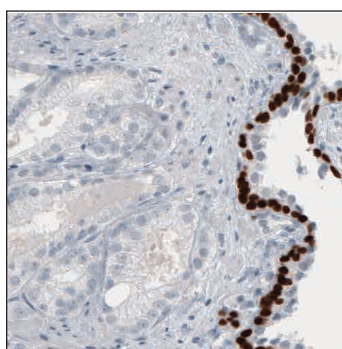


Figure 4

Immunohistochemical staining for the EMT marker Anti-TP63 Antibody (AMAb91224) of human prostate cancer shows absence of nuclear immunoreactivity in tumor cells, while it is present in the adjacent normal basal epithelial cells.

The Human Protein Atlas

The Human Protein Atlas (HPA) project has created a complete map of protein expression in all major organs and tissues of the human body (proteinatlas.org/tissue). At a subcellular level, protein expression is presented using confocal microscopy in human cell lines (proteinatlas.org/cell). Data from cancer tissues is presented in an interactive open-access database to allow genome-wide exploration of the impact of individual proteins on clinical outcomes (www.proteinatlas.org/pathology). To achieve these results, highly specific antibodies have been developed to all protein coding human genes.

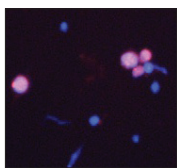
The antibodies developed within the Human Protein Atlas project are made available to the scientific community by Atlas Antibodies as Triple A Polyclonals.

Aviva Systems Biology - An Original Manufacturer

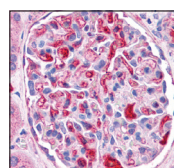
Aviva Systems Biology Corporation is a growing proteomic biotech company with a specialization in antibodies, recombinant proteins and ELISA Kits.

Aviva Systems Biology provides our customers with an extensive collection of quality antibodies for research and diagnostic applications. Aviva currently offers antibodies to more than 7,000 different protein targets. Our high throughput antibody production facility releases more than 200 new antibodies every month. Aviva's focus is antibodies to key targets in areas of transcription, epigenetics and cell signaling. Aviva's antibody collection includes unique antibody content to many targets that are not commercially available elsewhere, and antibodies to most members of key protein families such as Transcription Factors, Transcription Regulators, RNA Binding Proteins, Ion Channels, and Cell Membrane target proteins.

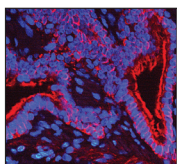
Aviva's top antibodies for Cancer research & Neuroscience



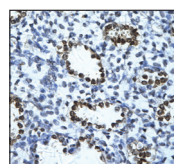
CASP3 Antibody (AVARP00021_T100)
Reactivity: Human
Application: WB, IHC
Sample Type: HeLa



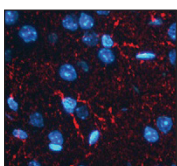
APOE Antibody (ARP54283_P050)
Reactivity: Human
Application: WB, IHC
Sample Type: Human Kidney



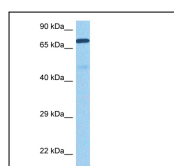
AKT1 Antibody (AVARP06008_P050)
Reactivity: Human, *Xenopus laevis*, Baboon
Application: WB, IHC
Sample Type: Human Lung



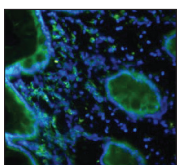
ENO1 Antibody (ARP34376_T100)
Reactivity: Human, Rat
Application: WB, IHC
Sample Type: Human Lung Tissue



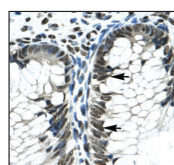
BACE1 Antibody (ARP46851_P050)
Reactivity: Human, Mouse, Rat
Application: WB, IHC, IF
Sample Type: Mouse Astrocytes



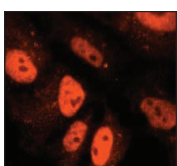
MMP9 Antibody (ARP33090_T100)
Reactivity: Human
Application: WB, IHC
Sample Type: Ovary Tumor Lysate



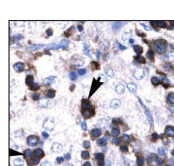
CXCR4 Antibody (ARP30799_P050)
Reactivity: Human, Mouse
Application: WB, IHC, FC
Sample Type: HMEC-1 and A549



GLI2 Antibody (ARP31885_T100)
Reactivity: Human, Mouse
Application: WB, IHC
Sample Type: Human Intestine



CRMP1 Antibody (ARP41933_P050)
Reactivity: Human, Mouse, Rat
Application: WB, ICC, IP
Sample Type: NT2 Cells



FOXP3 Antibody (ARP32743_T100)
Reactivity: Human, Mouse
Application: WB, IHC
Sample Type: Human Liver

Aviva Systems Biology is committed to providing validated antibodies. Unlike other companies, we design, manufacture and validate every antibody. Our polyclonal antibodies are always purified first by Protein A column and further by peptide immunogen affinity chromatography. Monoclonal antibodies are typically made by fusing myeloma cells with the spleen cells from a rabbit that has been immunized with the desired antigen. Our range includes antibodies against the following targets:

- Drugs and Drug Metabolism
- Cell Adhesion Proteins
- Cell Cycle Proteins
- Down Syndrome Proteins
- Drosophila Transcription Factors
- Growth Factors & Hormones
- Lymphocyte Signaling
- Malaria Transcription Factors
- Membrane Proteins
- Neurobiology
- Phospho Specific
- RNA Binding Proteins
- Signal Proteins
- Transcription Factors
- Transcription Regulation

Aviva's product category highlights:

Down Syndrome

A chromosome disorder associated either with an extra chromosome 21 or an effective trisomy for chromosome 21. We have manufactured ~400 antibodies against proteins encoded by genes on Chromosome 21 and other proteins related to Down Syndrome.

Lymphocyte Signaling

Lymphocytes are responsible for immune responses. Activation of lymphocytes requires exposure to a mitogen or to an antigen to which they have been primed. We have made more than 650 antibodies against proteins involved in signaling and subsequent transduction pathways in lymphocytes.

Malaria Transcription Factors

Malaria is a protozoan disease. Recent investigations into gene expression in protozoa parasites, suggest that they possess many of the canonical machineries employed by higher eukaryotes for the control of gene expression at transcriptional and epigenetic levels. We have manufactured antibodies against 150 Malaria related transcription factors.

Drugs and Drug Metabolism

We developed monoclonal antibodies for detection of drug and drug metabolic derivatives. They are suitable for ELISA and other applications.



Explore. Bioreagents.

Biorbyt dares to do things differently

Based in Cambridge, one of Europe's largest bioscience hubs, Biorbyt has a simple yet challenging mission: **to provide the best service to the global scientific community.**

As a team of scientists with many years of bench experience, we know first hand the issues you face every day. That's why we've been working with some of the world's finest researchers and academics to develop products of the highest quality. And that's why we carefully manufacture and meticulously test a wide range of reagents to meet your needs, whatever they are.

Our dedication doesn't stop there. We also collaborate, swap ideas and offer reagents that have been extensively tested in areas some of our competitors can't offer. So whether you need antibodies or ELISA kits, biochemicals or a custom request, you can depend on us to do things differently.

Quite simply, we're keen to know what you need so that our expert scientists can meet your requirements. No matter what research area you're in or which products are of interest, we're here to help.

Biorbyt: Products For Advancing Your Discoveries

From antibodies to proteins, biochemicals to ELISA kits, Biorbyt's high quality research products are available for you to enable world class research and contribution to a deeper understanding of life sciences.

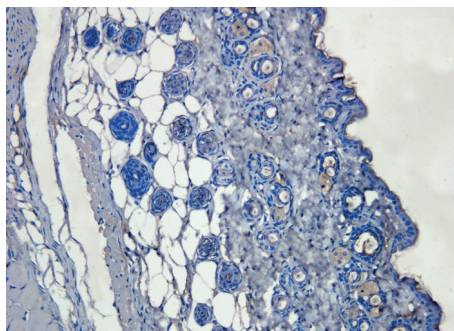
Biorbyt offers a comprehensive catalogue of life science research products covering areas including:

- Cancer Metabolism
- Cardiovascular
- Cell Biology
- Neuroscience
- Signal Transduction

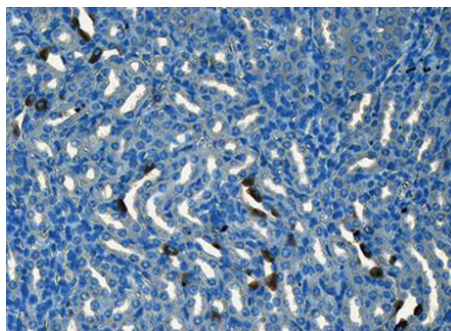
Supported by superb technical support from our team of experts evidenced by our ISO 9001:2015 accreditation for customer service.

Choose from over 200,000 primary antibodies and 5,000 secondary antibodies within the Biorbyt range. We offer both monoclonal and polyclonal antibodies tested in a number of applications including WB, IHC-P, ELISA, ChIP, Flow Cytometry and more and raised in a selection of species.

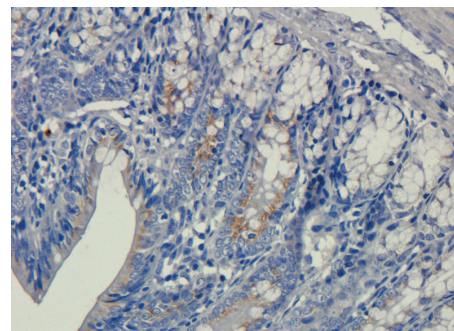
With each of our antibodies we offer a full product guarantee with technical support for all published applications and species. If the product does not perform to the high standard we expect, we will offer a replacement, or full refund, it's that simple.



Immunohistochemical staining of mouse skin tissue using CD163 antibody (dilution of primary antibody - 1:200)



IHC-P analysis of mouse kidney tissue using CD133 antibody (Primary antibody diluted to 1:200)



IHC-P image of rat colon tissue using anti-VEGFA (5 ug/ml)

We understand the value and importance of quality and validation to our end users and so we endeavour test our antibodies in WB and IHC-P at the minimum and in at least 2 species and tissue types. Unfortunately, this is not always possible, so we additionally rank our website search results so that for a given target, you will view our most highly validated antibodies first, with images and full product details.

Biorbyt prides itself on being able to help the researcher working in less common targets. We have gone out of our way to ensure that we can offer products to the rarer targets on which you work. As these antibodies are less widely used, they're often less highly validated, but they're still covered by our product guarantee and we'll do everything in our power to make our products work for your application. We have access to a wide range of tissues and species and so we can often test products for you to give you an indication of success or failure.

Most of our polyclonal antibodies are raised against highly specific peptides and our skilled team of technical staff are always happy to align the immunogen sequences against the protein in your less common target species to advise on whether identity is high enough to allow the antibody to cross react and recognise your specific protein.

Biorbyt is here to help, not just to supply















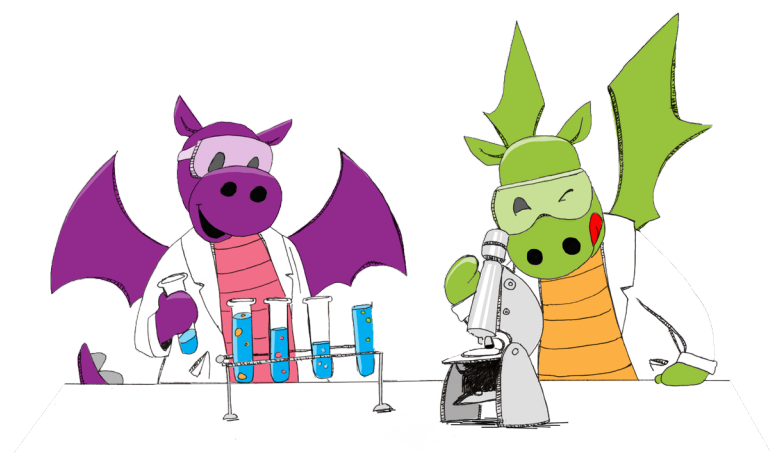
WHY BIOSS?

We are a leading antibody developer and manufacturer with state of the art technologies. We have developed over 11,000 primary antibodies and more than 130,000 derived products including fluorochrome-conjugated antibodies. In addition to reliable loading control and tag antibodies, our catalog includes over 1000 specific antibodies recognizing proteins with phosphorylation, acetylation or methylation modifications. BioSS, Inc. is located in the greater Boston area of Massachusetts, the center of the world's largest and fastest growing biotech community.

FEATURED PRODUCTS

TARGET	APPLICATION	SPECIES	CATALOG
8-OHdG 	IHC-P, IF(IHC-P)	Others	bs-1278R
Acrosin 	WB, IHC-P, IF(IHC-P)	Hu, Ms, Rt	bs-5151R
Adenosine A3 Receptor	WB, IHC-P, IF(IHC-P)	Hu, Ms, Rt	bs-1225R
APJ Receptor 	WB, FCM, IHC-P, IF(IHC-P)	Hu, Ms, Rt	bs-2430R
ASBT 	IHC-P, IF(IHC-P)	Hu, Ms, Rt	bs-4189R
ATF3 	WB, IHC-P, IF(IHC-P)	Hu, Ms, Rt	bs-0519R
ATF4/CREB-2 	WB, IHC-P, IF(IHC-P)	Hu, Ms, Rt	bs-1531R
ATF6 	WB, IHC-P, IF(IHC-P)	Hu, Ms, Rt	bs-1634R
BASP1	WB, IHC-P, IF(IHC-P)	Hu, Ms, Rt	bs-8662R
Beta galactosidase	WB, IHC-P, IF(IHC-P)	Hu, Ms, Rt	bs-4960R
beta-Actin 	WB, IF(ICC)	Hu, Ms, Rt, Bv Pg, Rb	bs-0061R
BMP2 	WB, IHC-P, IF(IHC-P)	Hu, Ms, Rt	bs-1012R
Cathepsin D/CTSD 	WB, ELISA, IHC-P, IF, ICC	Hu, Ms, Rt	bs-1615R
CD11b, CD11c 	WB, FCM, IHC-P, IF(IHC-P)	Hu, Ms, Rt	bs-1014R
CD134	IHC-P, IF(IHC-P)	Hu, Ms, Rt	bs-2685R
CD137 	WB, IHC-P, IF(IHC-P)	Hu, Ms, Rt	bs-2449R
CD138/Syndecan 1 	WB, IHC-P, IF(IHC-P)	Hu, Ms, Rt	bs-1309R
CD14 	WB, FCM, IHC-P, IF(IHC-P)	Hu, Ms, Rt	bs-1192R
CD161c/NK1.1 	WB, IHC-P, IF(IHC-P)	Ms, Rt	bs-4682R
CD163/M130 	WB, FCM, IHC-P, IF, ICC	Hu, Ms, Rt	bs-2527R

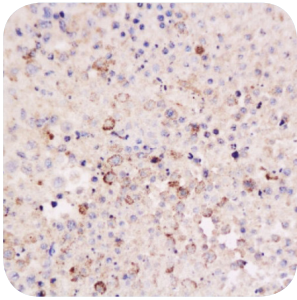
TARGET	APPLICATION	SPECIES	CATALOG
CD16a, CD16b 	WB, FCM, IHC-P, IF(IHC-P)	Hu, Ms, Rt	bs-6028R
CD19	WB, IHC-P, IF(IHC-P)	Hu, Ms, Rt	bs-4755R
CD19 Tyr531	WB, IHC-P, IF(IHC-P)	Hu, Ms, Rt	bs-3065R
CD200	WB, IHC-P, IF(IHC-P)	Hu, Ms, Rt	bs-6030R
CD28 	FCM, IHC-P, IF(IHC-P)	Hu, Ms, Rt	bs-1297R
CD30	WB, IHC-P, IF(IHC-P)	Hu	bs-2495R
CD31 	WB, FCM, IHC-P, IF(IHC-P)	Hu, Ms, Rt, Rb	bs-0195R
CD31 	FCM, IHC-P, IF, ICC	Hu, Ms, Rt, Dg	bs-0468R
CD36	WB, IHC-P, IF(IHC-P)	Hu, Ms, Rt	bs-8873R
CD4 	WB, IHC-P, IF(IHC-P)	Hu, Ms, Rt	bs-0647R
CD68 	WB, IHC-P, IF(IHC-P), ICC	Hu, Ms, Rt	bs-0649R
CD69/CLEC2C/AIM	WB, IHC-P, IF(IHC-P)	Hu, Ms, Rt	bs-2499R
CD8 	WB, IHC-P, IF(IHC-P)	Ms, Rt	bs-0648R
CD80 	WB, IHC-P, IF(IHC-P)	Ms, Rt	bs-2211R
CD86 	WB, IHC-P, IF(IHC-P)	Hu, Ms, Rt	bs-1035R
CEACAM8	WB, IHC-P, IF(IHC-P)	Hu	bs-0744R
CH25H 	IHC-P, IF(IHC-P)	Hu, Ms, Rt	bs-6480R
CHRNA7	WB, IHC-P, IF(IHC-P)	Hu, Ms, Rt	bs-1049R
CIAS1 	WB, IHC-P, IF(IHC-P)	Hu, Ms, Rt	bs-10021R
c-Kit 	WB, IHC-P, IF(IHC-P)	Hu, Ms, Rt, Dg	bs-0672R



THE BIOSS GUARANTEE

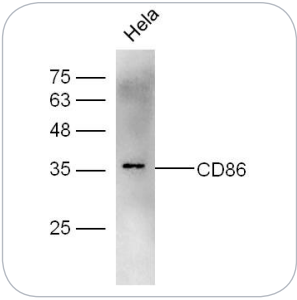
All products are protected by a six-month, replacement or money back, satisfaction guarantee for listed applications and species.

CD8 | bs-0648R



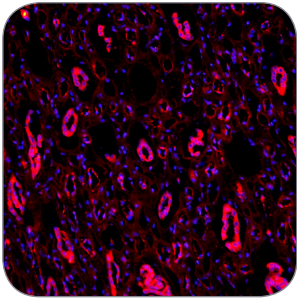
IHC-P | Mouse lymphoma tissue

CD86 | bs-1035R



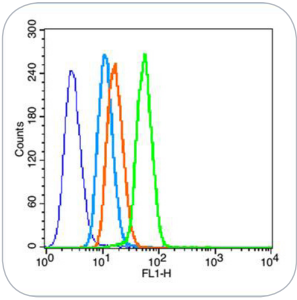
WB | HeLa cells

ICAM1 | bs-4618R



IF(IHC-P) | Human kidney

HIF-1 alpha | bs-0737R



FCM | HeLa cells

TARGET	APPLICATION	SPECIES	CATALOG
Collagen 1	WB, IHC-P, IF(IHC-P)	Hu, Ms, Rt	bs-10423R
Complement C3	IHC-P, IHC-F, IF, IF(IHC-F)	Hu, Ms, Rt, Bv	bs-2934R
Cux2	WB, IHC-P, IF(IHC-P), ICC	Hu, Ms, Rt	bs-11832R
CX3CR1	WB, FCM, IHC-P	Hu, Ms, Rt	bs-1728R
CXCL9/MIG	IHC-P, IF(IHC-P)	Hu, Ms, Rt	bs-2551R
CXCR2/CD182	WB, IHC-P, IF(IHC-P), ICC	Hu, Ms, Rt	bs-1629R
CXCR4	WB, FCM, IHC-P, IF(IHC-P)	Hu, Ms, Rt	bs-1011R
CXCR5/CD185	WB, IHC-P, IF(IHC-P)	Hu, Ms, Rt	bs-3598R
Elastin	WB, IHC-P, IF(IHC-P)	Hu, Ms, Rt	bs-1756R
EpCAM/CD326	WB, IHC-P, IF(IHC-P)	Hu, Ms, Rt	bs-1513R
ERK1/2 Thr202 + Tyr204	WB, IHC-P, IF(IHC-P)	Hu, Ms, Rt, Bv	bs-3016R
FAPA	WB, IHC-P, IF(IHC-P)	Hu, Ms, Rt	bs-5758R
Fibronectin	WB, IHC-P, IF(IHC-P), ICC	Hu, Ms, Rt	bs-0666R
FPRL1/Lipoxin A4 receptor	WB, FCM, IHC-P, IF(IHC-P)	Hu, Ms, Rt	bs-3654R
GDF8/MSTN	WB, IHC-P, IF(IHC-P)	Hu, Ms, Rt	bs-1288R
GLUT4	WB, FCM, IHC-P, IF(IHC-P)	Hu, Ms, Rt	bs-0384R
GPR55	WB, IHC-P, IF(IHC-P)	Hu, Ms, Rt	bs-7686R
HBsAg	WB, IHC-P, IF(IHC-P)	Hu	bs-1557G
HIF-1 Alpha	WB, FCM, IHC-P, IF, ICC	Hu, Ms, Rt	bs-0737R
ICAM1	WB, IHC-P, IF(IHC-P), ICC	Ms, Rt	bs-0608R
IFN gamma	WB, IHC-P, IF(IHC-P)	Ms, Rt	bs-0480R
IL-1 Beta	WB, IHC-P, IF(IHC-P)	Hu, Ms, Rt, Dg, Rb	bs-0812R
IL-1R1	WB, IHC-P, IF(IHC-P)	Hu, Ms, Rt	bs-2594R
IL-1R2	WB, IHC-P, IF(IHC-P)	Hu, Ms, Rt	bs-2595R
IL4R	WB, IHC-P, IF(IHC-P)	Hu, Ms, Rt	bs-2458R
IL-6	WB, IHC-P, IF(IHC-P)	Ms, Rt	bs-0782R
IL-6R Beta/CD130/gp130	WB, IHC-P, IF(IHC-P)	Hu, Ms, Rt	bs-1459R
iNOS	WB, IHC-P, IF(IHC-P)	Hu, Ms, Rt, Dg	bs-2072R
Integrin alpha 4/CD49d	WB, FCM, IHC-P, IF(IHC-P)	Hu, Ms, Rt, Rb	bs-0641R
Integrin alpha 7/ITGA7	IHC-P, IF(IHC-P)	Hu, Ms, Rt	bs-1816R
Integrin Alpha V + Beta 3	FCM, IHC-P, IF(IHC-P)	Hu, Ms, Rt	bs-1310R
Integrin beta 1	WB, IHC-P, IF(IHC-P), ICC	Hu, Ms, Rt	bs-0486R
Integrin beta 3	WB, ELISA, IHC-P, IF, ICC	Hu, Ms	bs-0342R
IRAK1 Thr209	WB, IHC-P, IF(IHC-P)	Ms, Rt	bs-10181R
KLF2	WB, IHC-P, IF(IHC-P)	Hu, Ms, Rt, Rb	bs-2772R
Klotho	IHC-P, IF(IHC-P)	Hu, Ms, Rt	bs-2925R
KRAS	WB, IHC-P, IF(IHC-P)	Hu	bs-1033R
LAMP-1	WB, FCM, IHC-P, IF, ICC	Hu, Ms, Rt	bs-1970R
LAMP2	WB, FCM, IHC-P, IF(IHC-P)	Hu, Ms, Rt	bs-2379R
LIFR/CD118	WB, FCM, IHC-P, IF(IHC-P)	Hu, Ms, Rt	bs-1458R

TARGET	APPLICATION	SPECIES	CATALOG
MCSF Receptor	WB, IHC-P, IF(IHC-P)	Hu, Ms, Rt	bs-2755R
MICA+MICB	WB, IHC-P, IF(IHC-P)	Human	bs-6933R
MRP2	WB, IHC-P, IF(IHC-P)	Hu, Ms, Rt	bs-1092R
MSR1	WB, IHC-P, IF(IHC-P)	Hu, Ms, Rt	bs-6763R
MTNR1B	IHC-P, IF(IHC-P), ICC	Hu, Ms, Rt, Bv	bs-0963R
Mycobacterium bovis	IHC-P, IF(IHC-P)	Bv	bs-4622R
MyoD1	WB, IHC-P, IF(IHC-P), ICC	Hu, Ms, Rt	bs-2442R
N-cadherin	WB, IHC-P, IF(IHC-P)	Hu, Ms, Rt	bs-1172R
NCR1	WB, IHC-P, IF(IHC-P)	Hu, Ms, Rt	bs-10027R
Nephrin	WB, IHC-P, IF(IHC-P)	Hu, Ms, Rt	bs-10233R
NKG2D	WB, FCM, IHC-P, IF(IHC-P)	Hu, Ms, Rt	bs-0938R
NRSF/REST	WB, IHC-P, IF(IHC-P)	Hu, Ms, Rt	bs-2590R
Occludin	WB, IHC-P, IF(IHC-P)	Hu, Ms, Rt, Pg	bs-1495R
PERK	WB, FCM, IHC-P, IF(IHC-P)	Hu, Ms, Rt	bs-2469R
RAC1 Ser71	WB, IHC-P, IF(IHC-P), ICC	Hu, Ms, Rt	bs-5698R
RANKL	WB, IHC-P, IF(IHC-P)	Hu, Ms, Rt	bs-0747R
RNF43	WB, IHC-P, IF(IHC-P)	Hu, Ms, Rt	bs-7007R
ROCK1 Thr455 + Ser456	WB, IHC-P, IF(IHC-P)	Hu, Ms, Rt	bs-4630R
S100-A9	IHC-P, IF(IHC-P)	Hu, Ms, Rt	bs-2697R
Smad7 + Smad6	WB, ELISA, IHC-P, IF(IHC-P)	Hu, Ms, Rt	bs-0566R
SOX2	WB, FCM, IHC-P, IF, ICC	Hu, Ms, Rt	bs-0523R
TGF beta 1	IHC-P, IF(IHC-P)	Hu, Ms, Rt	bs-0086R
TLR2	WB, FCM, IHC-P, IF(IHC-P)	Hu, Ms, Rt, Bv	bs-1019R
TNF alpha	WB, IHC-P, IF(IHC-P)	Hu, Ms, Rt	bs-2081R
TNMD	WB, IHC-P, IF(IHC-P), ICC	Hu, Ms, Rt	bs-7525R
TORC2 Ser171	WB, IHC-P, IF(IHC-P)	Hu, Ms, Rt	bs-3415R
Transferrin receptor	WB, FCM, IHC-P, IF, ICC	Hu, Ms, Rt	bs-0988R
UCP-2	WB, IHC-P, IF(IHC-P)	Hu, Ms, Rt	bs-1926R
Vimentin	WB, FCM, IHC-P, IF, ICC	Hu, Ms, Rt, Pg	bs-0756R
VLDL Receptor	WB, FCM, IHC-P, IF(IHC-P)	Hu, Ms, Rt	bs-4228R
ZO-1	IHC-P, IF(IHC-P), ICC	Hu, Ms, Rt, Pg	bs-1329R

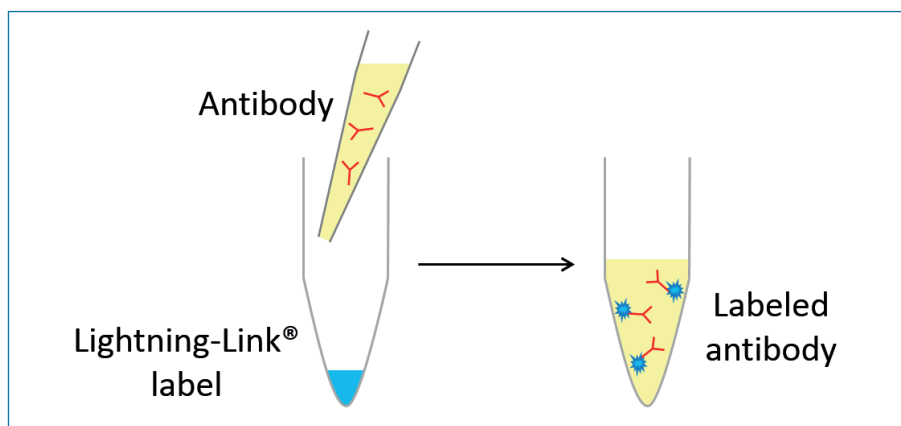
Expedeon is a UK-based company specializing in the development of next-generation tools for biological research, diagnostics, and drug discovery. With an extensive portfolio of innovative, ISO-accredited products, expertly designed to speed up research while delivering consistent high-quality data, the company has a strong focus on antibody labelling to suit a variety of downstream applications.

Offering the widely literature-cited Lightning-Link® kits for direct conjugation of antibodies to enzymes, fluorescent dyes or proteins, biotin or streptavidin, Expedeon also benefits from significant expertise in other antibody labeling modalities. Complementing the antibody-labelling kits with a selection of easy-to-use products for antibody purification, the company also manufactures novel kits for confirming successful antibody conjugation.

Lightning-Link® antibody labeling kits

Lightning-Link® technology enables direct labeling of antibodies, proteins, or any other biomolecule with an available amine group. Kits are supplied in a freeze-dried format, requiring only 30 seconds hands-on time to produce ready to use conjugates in under 20 minutes. With no separation steps, 100% of materials are retained during the labeling process.

The Lightning-Link® antibody labeling process



Lightning-Link® is fully scalable (10 µg to 1 g or more), affording easy transfer from R&D to manufacturing. Available conjugates include:

- Enzymes (Horseradish Peroxidase, Alkaline Phosphatase, Glucose Oxidase)
- Fluorescent proteins (Allophycocyanin, Phycoerythrin, PerCP)
- A wide range of fluorescent dyes (including Alexa Fluor®, DyLight® and Atto dyes)
- Biotin
- Streptavidin

Kits for labeling antibodies with other detection moieties

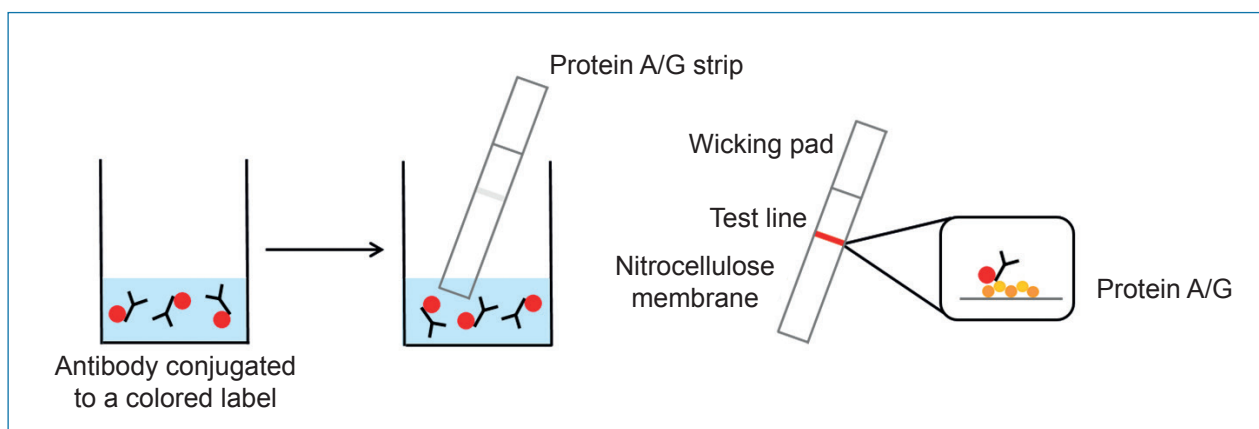
In addition to the Lightning-Link® product range for enzymatic, fluorometric or biotin/streptavidin-based immunodetection, Expedeon are experts in labeling antibodies to achieve other assay readouts. The company's growing portfolio includes kits for conjugating antibodies to:

- Latex beads
- Gold nanoparticles (InnovaCoat® GOLD)
- Oligonucleotides (ThunderLink® PLUS)
- Magnetic beads
- Europium particles

With utility in applications including lateral flow, immuno-PCR, immunoprecipitation and microwell-based assays, Expedeon's antibody labeling kits produce highly stable conjugates with no loss of material during the labeling reaction. Stringent QC testing ensures excellent batch-to-batch reproducibility to generate high quality data. Furthermore, with no extensive optimisation process required, researchers can save time, money and precious antibody reagents.

Check&Go! Conjugate Validation Kits

Expedeon's Check&Go! kits allow researchers to confirm the success of their antibody conjugation in one easy step. These simple qualitative lateral flow assays capture labelled IgG molecules at a 'test line' of immobilised Protein A and Protein G to produce a visible line indicative of effective conjugation.



Compatible with antibody conjugates generated using many of the Lightning-Link® antibody labeling kits, as well as with conjugates prepared using InnovaCoat® GOLD, latex conjugation kits, or any other conjugation technology that uses coloured labels, Expedeon's Check&Go! kits require only small volumes of diluted conjugate. Taking just 10 minutes to produce a clear result that can be observed with no need for specialist equipment, these products are unique to Expedeon.

GeneTex is an internationally recognized research antibody manufacturer. Our antibodies are supported by extensive research, development and validation. We are committed to the highest standards of product performance, and our entire team is dedicated to the goal of accelerating your discovery.

GeneTex was founded in 1997 in Texas by three scientists with expertise in clinical oncology, cancer biology and infectious disease. Based on their breadth of experience and research interests, the company's initial focus was breast cancer biology and prognostic marker research.

Over 40,000 Antibodies you can trust

GeneTex's product portfolio has since evolved and expanded to cover research areas including cell biology, epigenetics, immunology, infectious disease, metabolism, neuroscience, signal transduction, stem cell development and zebrafish biology.

- Stringent validation
- Over 14,000 citations
- Extensive antibody collections
- Multiple applications
- Trial size available



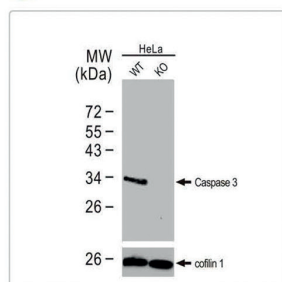
Quality Antibodies • Quality Results

At GeneTex, we understand that researchers need high-quality antibodies to achieve accurate and reproducible experimental results. Based on the five pillars of antibody validation, GeneTex employs multiple approaches to certify performance of our products.

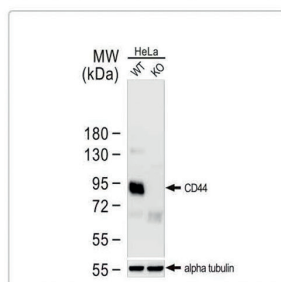


Elite Products

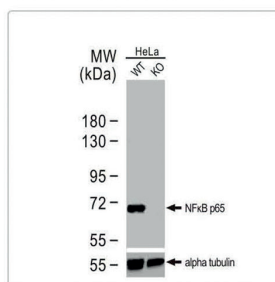
KO/KD Validation



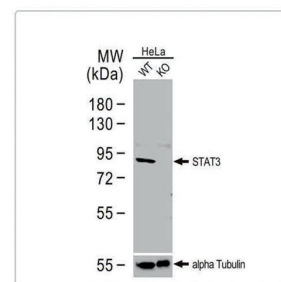
Caspase 3 antibody
(GTX110543)



CD44 antibody
(GTX102111)

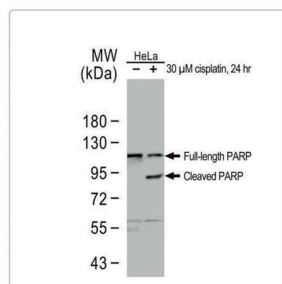


NFkB p65 antibody
(GTX102090)

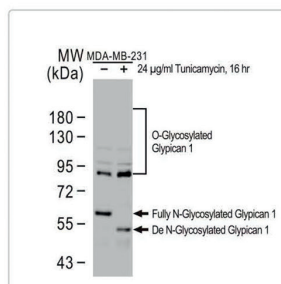


STAT3 antibody [C3],
C-term (GTX104616)

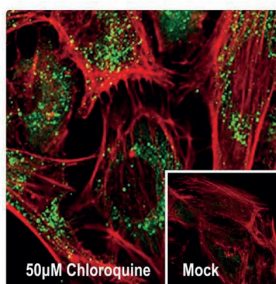
Orthogonal Validation



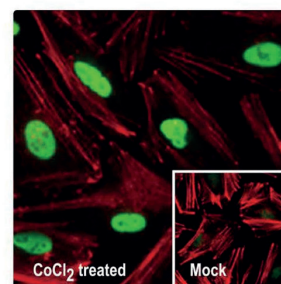
PARP antibody
(GTX100573)



Glypican 1 antibody
[N3C3] (GTX104557)

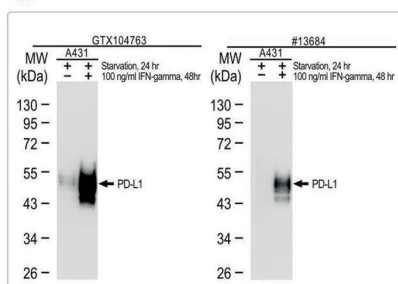


SQSTM1 antibody [N3C1],
Internal (GTX100685)

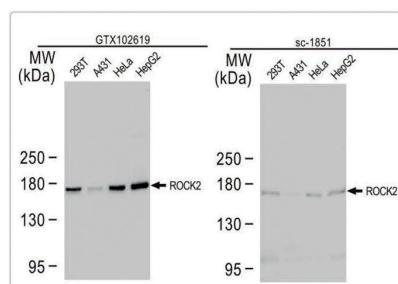


HIF1 alpha antibody
(GTX127309)

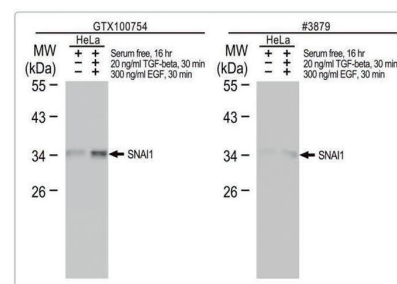
Comparative Abs



PD-L1 antibody
(GTX104763)



ROCK2 antibody
(GTX102619)



SNAI1 antibody
(GTX100754)

• Cancer

GeneTex is committed to the most stringent standards of product performance and are dedicated to the goal of accelerating your discoveries in cancer research. GeneTex has implemented knockout/knockdown-based validation in its antibody validation process to develop antibodies you can trust. The company has built a good reputation among researchers in the field and accumulated numerous citations.

• Neuroscience

Looking for antibodies that have been tested on neural tissues? GeneTex Neuroscience antibodies have been tested on primary cultured neurons and brain sections by multiple applications including IHC, ICC/IF and Western blot. The products cover antibodies for Neural markers, Neurotransmission (Ion channels, Neuropeptides...etc), Neurodegenerative disorders (Alzheimer's Disease, Parkinson's Disease, Huntington's Disease, Amyotrophic Lateral Sclerosis- ALS...etc.), and even vision and retina research!

• Inflammation

At GeneTex you can find antibodies against targets involved in inflammatory response and its downstream pathways, including Cytokines, Chemokines, Interferons, Interleukins, Toll-like receptors (TLRs) and so on. The antibodies have been tested for multiple applications. Antibody panels that collect key proteins for the pathway are available and are a convenient option for your study.

• Apoptosis

GeneTex offers more than 2,000 antibodies that are related to the apoptosis pathway, covering the inducers/inhibitors, Death receptors, the Bcl-2 family proteins, Caspases and Caspase substrates and so on. Drug-induced apoptosis and knockout/knockdown samples have been used for antibody validation. The Antibody panels for apoptosis collect key proteins for the pathway, which is a convenient option for your study.

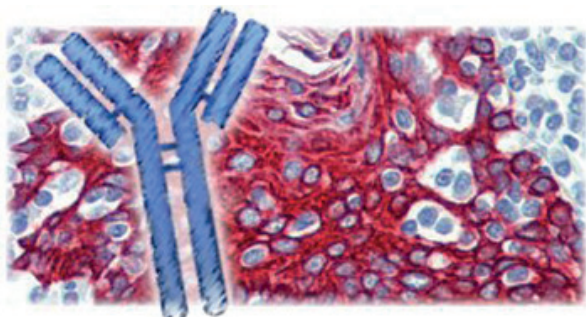
• Infectious Diseases

GeneTex is proud to offer an extensive catalog of antibody reagents that can facilitate your research into pathogenic microorganisms. The viral pathogen list includes Influenza viruses, Dengue virus, Japanese encephalitis virus (JEV), Yellow fever virus (YFV), Hepatitis viruses, Enterovirus (EV71, EV68, and Coxsackievirus), Human papillomavirus (HPV), Zika virus and Ebola virus. Antibodies have been tested with available virus-infected samples.

LSBio (LifeSpan BioSciences) offers a catalog of 130,000 antibodies that have been tested for use in a variety of research applications, including immunohistochemistry, ELISA, Western blot, and flow cytometry.

Antibodies can often be used in multiple assays, but they do not perform equally well in all assays. This is particularly true for immunohistochemistry (IHC). Many antibodies that perform well in other assays do not work well in IHC against formalin-fixed paraffin-embedded tissues (FFPE-IHC).

LSBio's goal in immunohistochemistry validation is to identify for our customers those antibodies that perform well in FFPE-IHC. Out of the 130,000 antibodies in the LSBio catalog, 35,000 have been tested and received validation for use in IHC by LSBio or through collaborators or suppliers. Of these, 9,900 antibodies have been extensively tested in our Seattle laboratory and awarded IHC-plus™ brand validation. IHC-plus™ antibodies have been identified as the best reagents for use in FFPE-IHC.



LSBio's IHC-plus™ antibodies have been tested and identified as being optimal for use in immunohistochemistry (IHC) against formalin-fixed paraffin-embedded (FFPE) human tissues under LSBio's standardized IHC-plus™ immunohistochemistry protocol.

IHC-plus™ Antibody Validation

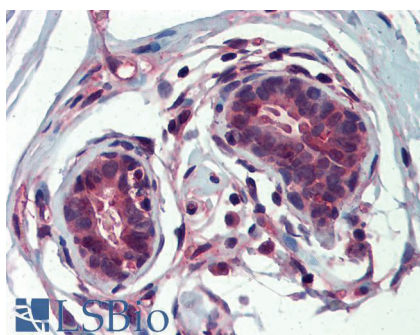
Each antibody is tested at multiple concentrations on more than 20 normal human tissue types, and when appropriate, multiple normal brain regions and/or cancer types. A LifeSpan pathologist, with extensive experience evaluating IHC, analyzes the localization profile of each antibody, identifying positive and negative cell types, signal strength, subcellular and extracellular staining, and staining artifacts. In order to be selected as an IHC-plus™ brand antibody, antibodies must have a close correlation to the published literature, be high affinity, display minimal staining artifacts, and have a high signal-to-noise ratio, such that its specific staining is considerably higher than its level of nonspecific background staining.

Every antibody is backed by our superior Technical Support staff, and every purchase is protected by our 100% satisfaction guarantee.

Best Sellers:

BRCA1 Antibody IHC plus™ LS B3772

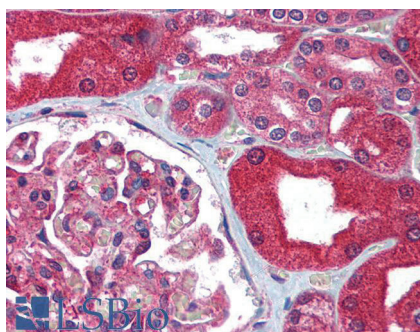
BRCA1 antibody LS-B3772 is an unconjugated rabbit polyclonal antibody to BRCA1 from human, mouse and rat. Validated for IHC, IP and WB. Tested on 20 paraffin-embedded human tissues.



Anti-BRCA1 antibody IHC of human breast. Immunohistochemistry of formalin-fixed, paraffin-embedded tissue after heat-induced antigen retrieval. Antibody concentration 5 µg/ml.

ABCB1 / MDR1 / P Glycoprotein Antibody (aa262 277) IHC plus™ LS B1448

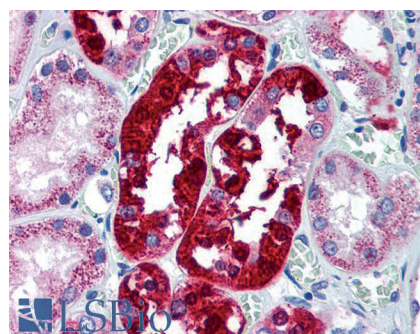
P Glycoprotein antibody LS-B1448 is an unconjugated rabbit polyclonal antibody to P Glycoprotein (ABCB1 / MDR1) from human, mouse, rat and other species. Validated for ELISA, IHC and WB. Tested on 20 paraffin-embedded human tissues.



Anti-MDR1 antibody IHC of human kidney. Immunohistochemistry of formalin-fixed, paraffin-embedded tissue after heat-induced antigen retrieval. Antibody concentration 5 µg/ml.

APG5 / ATG5 Antibody IHC plus™ LS B1843

ATG5 antibody LS-B1843 is an unconjugated rabbit polyclonal antibody to ATG5 (APG5) from human, mouse, rat and other species. Validated for IHC. Tested on 20 paraffin-embedded human tissues.



Anti-ATG5 antibody IHC of human kidney. Immunohistochemistry of formalin-fixed, paraffin-embedded tissue after heat-induced antigen retrieval. Antibody concentration 5 µg/ml.

MBL International develops, manufactures, and markets a broad portfolio of monoclonal and polyclonal antibodies. The core technology of MBL includes monoclonal antibody development, utilising novel procedures originally developed by Japanese immunologists.

Our mouse monoclonal antibody techniques include Artificial Lymph Node Technology and Immunogenicity-Enhancing Antigen Technology. SPYMEG, a novel human lymphocyte fusion partner cell line, can be used to construct hybridomas producing human monoclonal antibodies of completely human origin.

Our complete primary antibody catalogue includes:

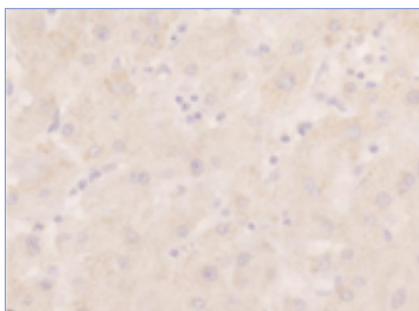
- Antibodies generated in host species: Chicken, Goat, Guinea Pig, Hamster, Human, Mouse, Rabbit and Rat
- Against target species: Bacteria, Bovine, Cat, Chicken, C. Elegans, Dog, Hamster, Horse, Human, Mouse, Pig, Primate, Rat and Xenopus
- Labels available: Agarose, Alexa Fluor® 488, Alexa Fluor® 594, Alexa Fluor® 647, APC, Biotin, FITC, HRP, Magnetic Agarose, Magnetic Beads, PE and PerCP-Cy5.5
- Suitable for use in applications: ChIP, ELISA, Flow Cytometry, Immunocytochemistry, Immunohistochemistry and Immunoprecipitation
- For research areas: Autophagy, Cancer, Cell Biology, Epigenetics, Immunology, Metabolism and Neuroscience

Product focus: Rabbit anti Human p62 (SQSTM1) polyclonal antibody

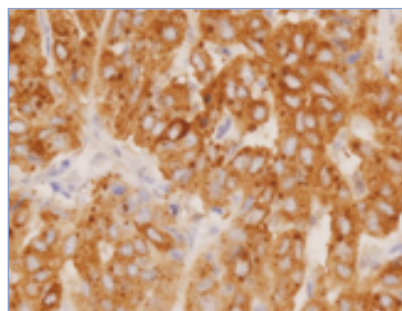
The ubiquitin-conjugating protein p62/SQSTM1 is thought to be a scaffold protein that interacts with a variety of molecules involved in toll-like receptor (TLR) signalling, such as TRAF6, ERK, and aPKC. Recent evidence suggests that p62 binds directly to the autophagosome marker LC3 and is then selectively degraded by autophagy.

This antibody is widely cited and validated for use in Immunocytochemistry, Immunoprecipitation, Western blot and Immunohistochemistry.

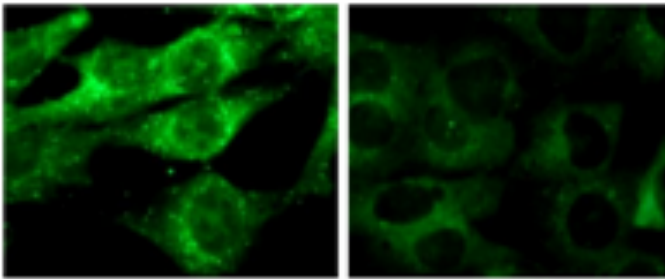
Normal liver



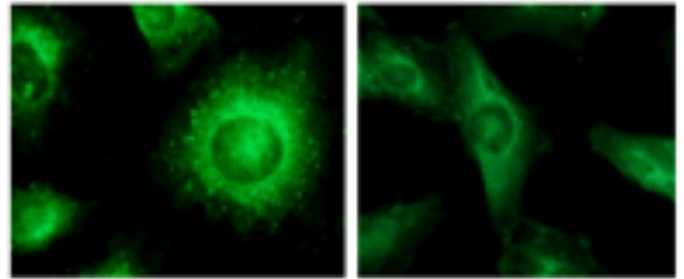
Liver carcinoma



Immunohistochemical detection of p62 on paraffin embedded section of human liver carcinoma and normal liver with PM045.
Tissue array (MBL; code no. COMO1003) was used for this application.



Immunocytochemical detection of p62 on 4% PFA fixed starved MEF cells (left) and nutrient MEF cells with PM045.

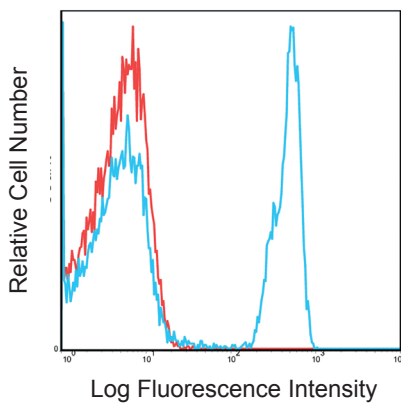


Immunocytochemical detection of p62 on 4% PFA fixed starved normal rat kidney (NRK) cells (left) and nutrient NRK cells with PM045.

Primary antibodies for use in flow cytometry:

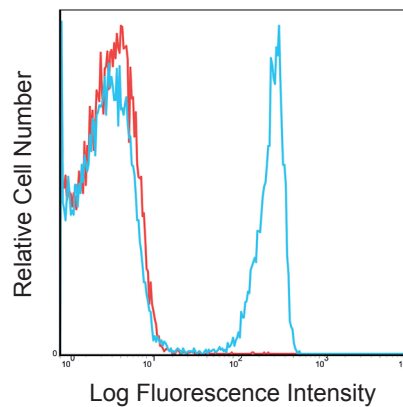
Targets include CD4, CD8, Foxp3, IL-4, CD3, CD11, CD20, CD30, CD40, CD45, Fas, LC3, p62, Flavocytochrome b, PD-1 and SynCAM.

- Consistent lot to lot performance
- High signal to noise ratio
- Bright fluorochromes



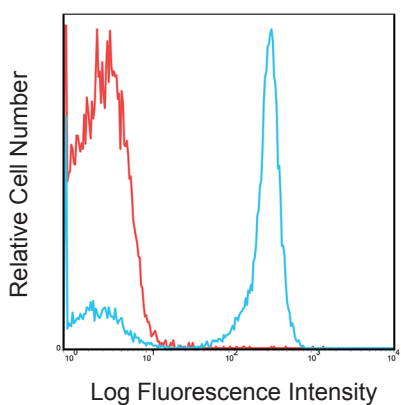
Code No.
FP10325010

Anti-CD4 (Human)
mAb-FITC



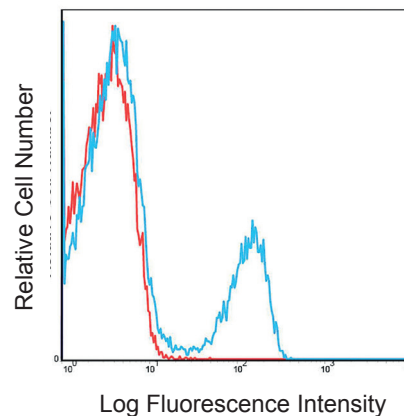
Code No.
FP10337710

Anti-CD4 (Human)
mAb-PE-Cy7



Code No.
FP20276010

Anti-CD45 (Mouse)
mAb-PE



Code No.
FP20885010

Anti-TCR beta (Mouse)
mAb-FITC



Your CUSTOM Antibody Experts

ProSci offers a broad catalogue of over 50,000 research reagent products. Their own in-house labs and animal facilities (USDA licensed and NIH/OLAW assured) are located in the US and provide an extensive array of antibody services. ProSci provides its customers with practical experience, innovative products, competitive pricing, high-quality research tools, and customised services. Established in 1998, ProSci is a reliable partner with over 15 years of serving the research community globally.

Product highlights

- Multiple Species Reactivity
- Multiple validations
- Highly Published
- Made in the USA

Products

ProSci products include primary antibodies and antibody related reagents for research applications in the life science research community, biotech and pharmaceutical industries. Providing high performance products and customer satisfaction are the primary goals of ProSci.

- Primary Antibodies (30000+): Monoclonal and polyclonal antibodies from many different host species including rabbit, mouse, chicken, goat and validated in WB, IHC, and ICC/IF.
- Secondary Antibodies (50+): ProSci offers a wide array of secondary antibody conjugates for use in many different immunoassays.

Highly validated items:

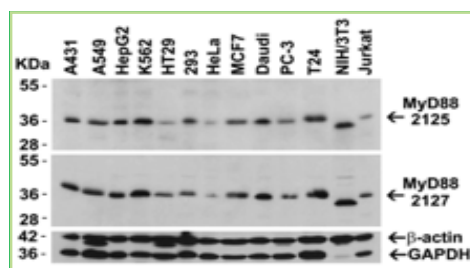
We understand that in order to achieve accurate and reproducible results it is a necessity for reliable, specific and sensitive antibodies. To maintain consistent results and decrease lot-to-lot variability, we use advanced validation techniques in the QC of our antibody reagents:

• Independent antibody validation

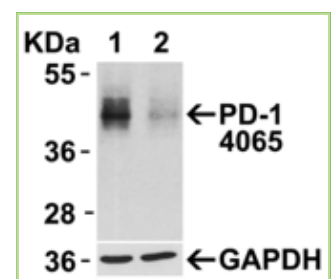
• Genetic modification

• Relative expression

• Peptide neutralization



Independent Antibody
Validation



Knockdown (KD)

Top selling antibodies:

Cat no	Product Name
4059	PD-L1 Antibody
2283	RIP3 Antibody
3687	XBP-1 Antibody
5195	CD81 Antibody
2093	CX3CR1 Antibody
3613	Beclin-1 Antibody
5449	SQSTM1 Antibody
4887	IL-17 Antibody
4211	CDKN2A Antibody
2437	Noxa Antibody
1131	TACE Antibody
2051	ADAM10 Antibody
2127	MYD88 Antibody
5555	PRDM16 Antibody
4337	StreptII-tag Antibody
7793	PPARGC1A Antibody
2019	DR5 Antibody

Cat no	Product Name
3655	IRE1p Antibody
5391	AGTR1 Antibody
3809	TIM-1 Antibody
3363	ST2 Antibody
5603	KLF4 Antibody
3783	GAPDH Antibody
2397	BCMA Antibody
3643	TLR3 Antibody
3195	Caspase-12 Antibody (Large)
7733	TET1 Antibody
4065	PD-1 Antibody
3041	PUMA Antibody
5159	Albumin Antibody
5389	RIPK1 Antibody
2065	Bim Antibody
3793	IL-23 Antibody
6217	GLS2 Antibody

Product focus:

Product	Research area	Applications	Species	Publication
1009 (CXCR4)-NT:	Chemokines & Cytokines, Stem Cell, Infectious Disease	E, WB, ICC, IP, IF, FACS	Human, Mouse	PMID: 1952448 (WB) PMID: 19383826 (WB) PMID: 20197403 (WB/FACS)
2093 (CXCR3R1)-NT	Chemokines & Cytokines, Cancer	E, WB, IHC, IF, FACS	Human, Mouse, Rat	PMID: 19369458 (WB) PMID: 22198947 PMID: 16317113 (FACS) PMID: 14581400 (IHC)
2019 (DR5)	Apoptosis	E, WB, ICC, IF	Human, Mouse	PMID: 23833311- September 2013 PMID: 23766363- August 2013
2283 (RIP3)	Apoptosis	E, WB, IHC, IF	Mouse, Rat	PMID: 21368761 (WB, IHC)



Established in 2007, StressMarq Biosciences Inc. is a supplier of life science products that operates out of Victoria, Canada with a small, but dedicated group of scientists. Headed by our CEO and President Dr. Ariel Louwrier, StressMarq provides the research community with high-quality reagents backed with rigorous quality control data, expert scientific support, and fast international delivery.

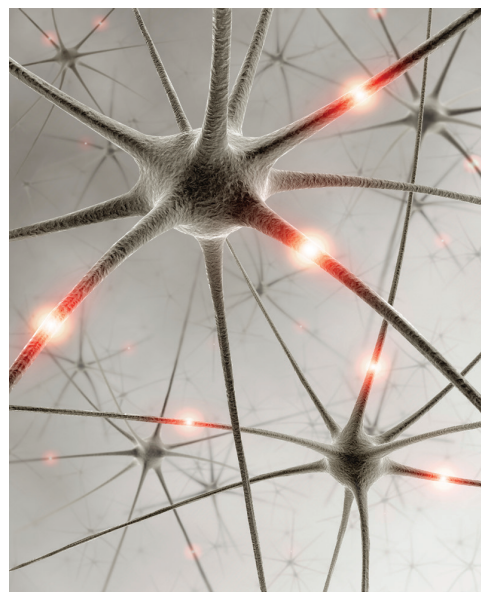
“Discovery through partnership, Excellence through quality”

With over 7,000 products, our growth can be attributed to the continual production of cutting edge research products. Our diverse portfolio of primary antibodies, antibody conjugates, proteins, immunoassay kits and small molecules bridges across the life sciences, including products for cancer research, cardiovascular disease, cell signaling and neuroscience. To aid research worldwide, StressMarq has an extensive network of international distributors that allow us to supply reagents to over 50 countries.

In the years to come, StressMarq will continue to aid life science research by providing ***“Discovery through partnership, and Excellence through quality”***.

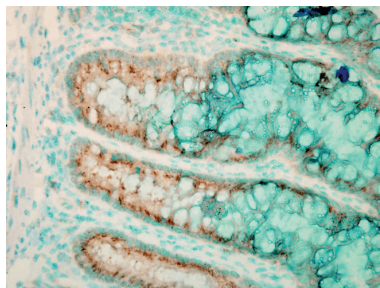
General information on our Primary Antibodies:

- StressMarq carries over 16,000 highly-validated monoclonal and polyclonal primary antibodies
- Our primary antibodies can come conjugated to 17 different conjugates /dyes
- We offer sample sizes in our trial program so researchers can test untested species or untested tissue/cell types
- The products cover a multitude of research areas including Cancer, Cardiovascular Disease, Cell Signaling, and Neuroscience
- Neuroscience is our biggest push at the moment, with a focus on Neurodegenerative Diseases like Alzheimer's Disease
- We have started to add in phospho specific antibodies
- We encourage collaboration, and welcome inquiries

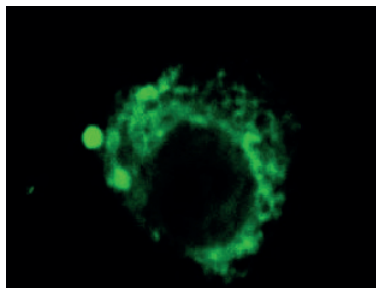


Top 5 Sellers:

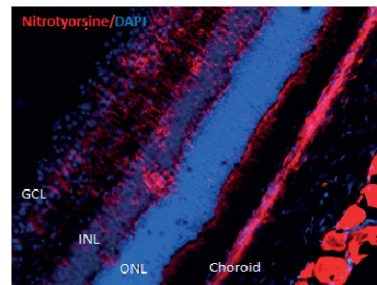
SMC-155D	DNA/RNA Damage Monoclonal-Purified Antibody, Clone 15A3
SPC-200D	TLR4 Polyclonal-Purified Antibody
SMC-122D	PSD95 Monoclonal-Purified Antibody, Clone 6G6
SMC-154D	Nitrotyrosine Monoclonal-Purified Antibody, Clone 39B6
SMC-141D	LAMP2 Monoclonal-Purified Antibody, Clone GL2A7



SPC-200 Immunohistochemistry analysis using Rabbit Anti-TLR4 Polyclonal Antibody (SPC-200). Tissue: colon colitis. Species: Mouse. Fixation: Formalin. Primary Antibody: Rabbit Anti-TLR4 Polyclonal Antibody (SPC-200) at 1:100000 for 12 hours at 4°C. Secondary Antibody: Biotin Goat Anti-Rabbit at 1:2000 for 1 hour at RT. Counterstain: Methyl Green at 200uL for 2 min at RT. Localization: Inflammatory cells.



SMC-141 Immunocytochemistry/Immunofluorescence analysis of Rabbit Corneal Endothelial Cell (CEC) using LAMP2 Antibody (SMC-141). This image is courtesy of Eunduck E.P. Kay, Doheny Eye Institute. Magnification: 40x.



SMC-154 Immunohistochemistry analysis of Mouse Retinal Injury Model using Nitrotyrosine Antibody (SMC-154). This image is courtesy of Dr. Rajashekhar Gangaraju, University of Indiana, Department of Ophthalmology, Eugene and Marilyn Glick Eye Institute.

Antibodies of Note:

ENaC Antibodies:

Target	Clone	Host	Applications	Species	Catalog No.
ENaC alpha**	PAb	Rabbit	WB, IHC, ICC/IF	Rt, Ms, Xe	SPC-403
ENaC alpha	2G4	Mouse	WB, IHC, IF	Ms, Rt	SMC-239
ENaC alpha	14E10	Mouse	WB, ICC/IF	Ms, Rt	SMC-242
ENaC beta**	PAb	Rabbit	WB, IHC, ICC/IF, IP	Hu, Ms, Rt, Xe, Hm	SPC-404
ENaC beta	7B8	Mouse	WB, IHC	Ms	SMC-240
ENaC beta	16E4	Mouse	WB	Ms	SMC-241
ENaC gamma**	PAb	Rabbit	WB, IHC, ICC/IF	Rt, Ms, Xe, Hm, Hu	SPC-405

** Highly referenced in the literature.

Cell Surface HSP70 (Catalog No. SMC-249):

• A unique antibody in that it can bind to the extracellular region of cell membrane embedded HSP70 protein, allowing researchers to differentiate between intracellular and cell membrane embedded HSP70 across cancer cell types.

Lipid Peroxidation Antibodies

- Acroelin (2 MABs)
- Hexanoyl-Lysine Antibodies (2 MABs)
- Dityrosine (2 MABs)
- MG (2 MABs)
- MDA (2 MABs)
- 4-HNE
- 7-Ketocholesterol (2 MABs)
- Crotonaldehyde (2 MABs)

Alpha Synuclein Antibodies

- Anti-Human Alpha Synuclein pSer129 PAb SPC-742
- Anti-Mouse Alpha Synuclein clone 3C11 SMC-530
- Anti-Mouse Alpha Synuclein clone 10H7 SMC-531
- Anti-Mouse Alpha Synuclein clone 3F8 SMC-532
- Anti-Mouse Alpha Synuclein clone 4F1 SMC-533

Additional Primary Antibody Suppliers



Abnova is the world's largest antibody manufacturer. We have the capacity of generating 300 mouse monoclonal antibodies and 200 rabbit polyclonal antibodies per month. Rather than the traditional method of antibody production, Abnova is taking a genomic/proteomic approach for the antibody development. Our goal is to have at least one antibody to every human expressed gene in human genome. We manufacture all our products, recombinant proteins and antibodies in our state-of-the-art production and SPF animal facilities. We also have multiple clones for the monoclonal antibody, and their access is available to partners and collaborators from the academic institutions and industry.



BioLegend's high quality antibodies undergo extensive validation and quality control. We operate under an ISO 13485:2003-certified quality management system using stringent documentation and continuous improvement, meeting international standards for medical device manufacturing. There are over 64,000 articles citing BioLegend products and our antibodies have consistently ranked in the top 4 in Specificity and Sensitivity in a major industry survey.



BioVision has recently expanded its selection of primary antibodies and their corresponding blocking peptides to encompass the majority of areas of current research interest. Our antibodies are manufactured using proprietary techniques which increase the specificity, decrease the background and are compatible with conventional protocols used in laboratories. These antibodies can be used for Western blotting and many have additional application for immunohistochemistry (IHC), immunoprecipitation (IP) and neutralization studies. We also offer a selection of phospho-specific antibodies, secondary (HRP-conjugated) antibodies, as well as, tag, marker and loading control antibodies.



Everest Biotech have been specialising in anti-peptide and antigen affinity purified goat polyclonal antibodies since 2000. The primary antibodies are tested by peptide ELISA, Western blot, and recently we have included immunofluorescence and flow cytometry to our routine testing. The company's commitment to quality and continuous improvement has been recognised with ISO 9001:2015 accreditation.



Fitzgerald is a manufacturer and supplier of primary antibodies and many other biological reagents. Our motto 'Bringing Life to Science' illustrates our personal approach to addressing the individual needs, interests and expertise of our customers. We believe that our outstanding customer service and excellent quality products at competitive prices are key to our success.



High quality antibodies targeting human antigens for Flow Cytometry Antibodies for diagnostic or research use with high quality and lot-to-lot consistency in line with the diagnostic guidelines for flow cytometry analysis. Choose from a wide range of antibodies of high value clones, all manufactured and inspected under the latest ISO 13485 conditions.



Mabtech specializes in the development of antibodies for immunoassays, especially sandwich immunoassays. We have developed a number of matched antibody pairs that enable highly sensitive and specific analysis. The antibodies are also sold as separate reagents for use in numerous applications. Our product range includes monoclonal antibodies for human, non-human primate, mouse and veterinary research. Antibodies are available in purified form or conjugated to biotin, enzyme or fluorophore. Mabtech's antibodies are suitable for many applications. The major application areas for our antibodies are: ELISA, ELISpot, cell stimulation, neutralization, Western blot, cell staining and flow cytometry.



MyBioSource has the most expansive and best portfolio of antibodies for the worldwide life sciences community as well as comprehensive customer and technical support. MyBioSource's portfolio includes recombinant antibodies, monospecific antibodies, and matched antibody-antibody or antibody-protein pairs for ELISA/immunoassay development. A unique program includes made-to-order recombinant proteins and corresponding antibodies to almost any protein with a known sequence.



United States Biological is a primary brand for the Life Science Industry.

We are committed to reducing the cost of research with value, integrity and a truly personal buying experience. United States Biological's biochemicals, antibodies, recombinant proteins, cell culture media and molecular biology kits are used in virtually all scientific applications and settings, including genomic research, biotechnology, pharmaceutical development and the diagnosis of disease. Products are available from affordable research quantities to larger bulk amounts for process development and production. Our customers include most of the leading pharmaceutical and biotechnology companies located in the US and abroad.

Quality at the best price!

4 pipette bundle pack :

(0.1 – 2 µl / 2 – 20 µl / 20 – 200 µl / 100 – 1000 µl)

Article no: ABM-B254

€299

The Single Channel Pipettors are affordable lightweight instruments which offer high precision and accuracy:

- Thumb-friendly spring system
- Colour-coded labeling system to distinguish capacity volume ranges
- Easy calibration without the need of special tools
- Comfortable and lightweight to reduce hand strain
- Able to pipette liquids of varying densities



BIOZOL Diagnostica Vertrieb GmbH
Obere Hauptstrasse 10b
85386 Eching, Germany

Telephone: +49-89-37 99 666-6
Fax: +49-89-37 99 666-99
E-Mail: info@biozol.de

Freecall Telefon 08000-BIOZOL
(i.e. 0800-024 69 65)

BIOZOL
FIT FOR SCIENCE

www.biozol.de